

LogicGate Agility 2025

The Momentum Continues

2024 was a breakout year for LogicGate. We saw record growth, welcomed more customers than ever before, and continued to expand the impact of GRC across some of the most innovative organizations in the world. That momentum isn't just something we're proud of, it's something we're building on.



Matt Kunkel
Co-Founder & CEO

If the past year taught us anything, it's that change doesn't wait for anyone. From regulatory shifts to the explosion of AI, last year reminded all of us just how quickly the ground can move beneath our feet. In times like that, the organizations that succeed aren't necessarily the biggest or fastest, they're the ones that can adapt.

Adaptability is more than just a buzzword, though; it's the mindset that's shaped how we build, how we partner, and how we help you turn risk into a strategic advantage. From day one, we intentionally designed Risk Cloud to be flexible, connected, and intelligent- built to adapt as fast as your business does. We've never been interested in just adding more features. We're building something more ambitious: a platform that grows with you, evolves alongside your challenges, and empowers your teams to lead through uncertainty.

The innovations presented at Agility 2025 are all part of that vision— **smarter systems, stronger connections, and a more dynamic approach to GRC**. We're proud of how far we've come, and even more excited about where we're going, together.



Flexible

Configurable, no-code workflows built to match how your business runs.



Connected

Graph Database that links all records for full visibility across your ecosystem.



Intelligent

AI that enhances decision-making, speeds up tasks, and scales your impact

Innovation Showcase

Introducing Dynamic GRC

Take a moment to ask yourself: *Is your risk and compliance program truly keeping pace with your business?* Is it driving momentum, or struggling to keep up? In a world defined by speed, complexity, and constant change, traditional GRC approaches are no longer enough. Manual processes, siloed systems, and point-in-time assessments leave organizations exposed and reactive.



Jon Siegler
Chief Product Officer

Moving beyond the static GRC trap takes more than new software. It requires intentional evolution. It requires **Dynamic GRC**.

Flexible. Connected. Intelligent.

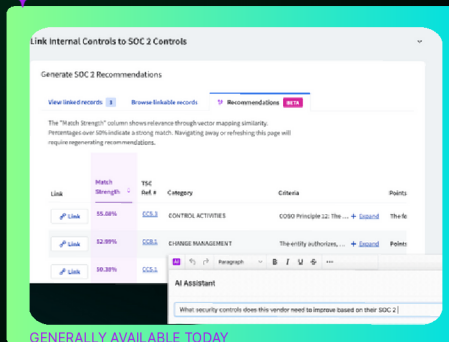
- 1 With integrations like Tenable, Black Kite, AscentAI, and Crowe, Risk Cloud pulls data into a centralized ecosystem to fuel smarter decisions.
- 2 Spark AI maps the data to the right control in your library, updates the associated risk score, and notices it's crossed your defined threshold.
- 3 Without you lifting a finger, a workflow kicks off, complete with recommended actions to bring that risk back into tolerance.

That's Dynamic GRC in motion. And this is how we're going to get there.

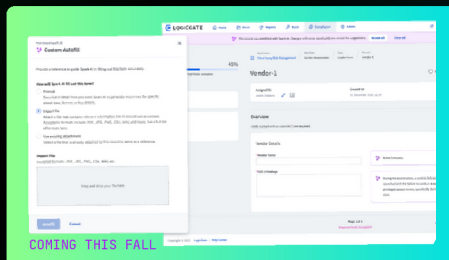


Spark AI Intelligence That Works With You

✦ Spark AI as a Copilot



✦ Spark AI Autofill



Amrutha
Sivakumar
Sr. Director,
Product Management



Brett Bush
AI Engineering &
Developer
Relations Lead

Spark AI is LogicGate's opt-in, platform-wide copilot, purpose-built to help GRC professionals move faster and smarter in a complex world. Today, **Spark AI** supports users by linking records, suggesting control mappings, and generating tailored text using contextual data. But its future is even more ambitious: an agent-based system that can autonomously perform tasks like vendor outreach, risk triage, and control evaluation, with minimal human input.

The goal isn't to replace people. It's to remove friction, reduce manual burden, and make space for meaningful, high-value work in GRC programs.

This is not AI for the sake of novelty. This is AI designed to make your GRC program more intelligent, efficient, and scalable.

Key Takeaways

- 1 **Spark AI** is a copilot, for now
- 2 We're moving towards agents, carefully
- 3 Agents can be tailored to GRC use cases
- 4 The future is workflow-driven intelligence

Simpler Risk Management

Your Command Center for Risk



Grace Miller
Sr. Product Manager



Sam Seo
Associate Product Manager

Managing risk shouldn't be a tangled mess of disconnected spreadsheets, delayed insights, or scattered systems. LogicGate's latest enhancements for Operational Risk Management are focused on making risk management simpler, smarter, and more centralized.

- Easily link related records, like risks, controls, and assets, to reflect how your organization operates
- Leverage Crowe's Risk Curator for a structured way to build risk and control taxonomies
- Bulk-create and manage multi-level assessments by department, process, or system using flexible scoping tools
- Enable smarter and easier reporting that helps teams prioritize risk and track progress

Whether you're tackling enterprise risk, cyber threats, or third-party exposure, Risk Cloud gives you the tools to connect the dots and drive better decisions across the board.

“

Recent performance optimizations improved large Visual Report times up to 90%!

Sam Seo

”

Why Customers Love Risk Cloud Reports

1

“The Reporting feature is the most powerful tool and has helped us gain insights and analytics we would not have been able to before.”

2

“No digging through files or folders. It's all within Risk Cloud, and we set up reports for anything (our stakeholders) want to see.”

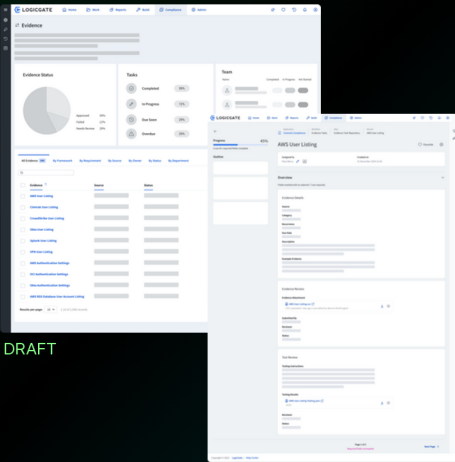
3

“Need a report for something? Determine the story you are trying to tell, find the data in your existing workflows, and you can create the reports yourself without the vendor.”

The Future of Compliance Is Automated

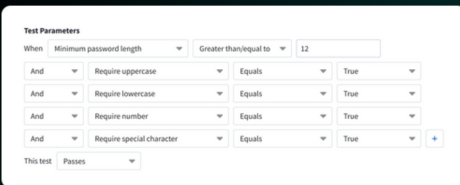


Currently Exploring:
Evidence & Record pages

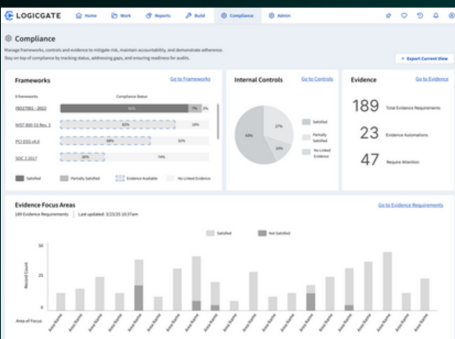


DRAFT

DRAFT



DRAFT



DRAFT



Nick Binkus
Product Manager



Chelsie Zhang
Sr. Product Manager

Compliance shouldn't be a bottleneck. That's why LogicGate is reimagining how organizations manage compliance by automating the most tedious, time-consuming parts of the process.

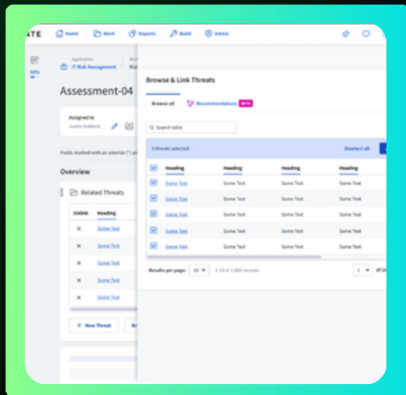
Today in Risk Cloud, you can automatically pull and store data from 75+ sources, with more integrations on the way. And now, Risk Cloud's Automated Control Gap Analysis can compare your current frameworks with new ones to identify overlaps and gaps instantly.

But we're not stopping there. With Continuous Controls Monitoring (CCM), you move beyond point-in-time audits to real-time validation of control effectiveness.

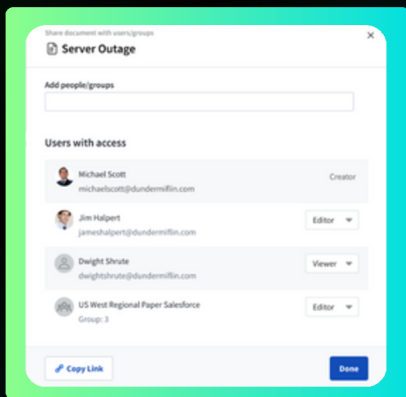
- 1 Evidence is pulled continuously from integrated systems
- 2 Evidence is validated against predefined control attributes, allowing issues to surface as they happen
- 3 Dashboards aggregate test results, giving teams real-time insight into risk and compliance status
- 4 With a full audit trail and reduced manual effort, teams can act faster, reduce fatigue, and stay perpetually audit-ready.

GRC That Works the Way Teams Actually Work

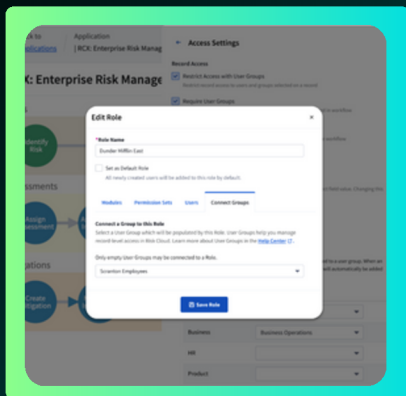
Where We're Headed



Find and Connect Data Faster



Assign Tasks to Teams



Zero Touch Access

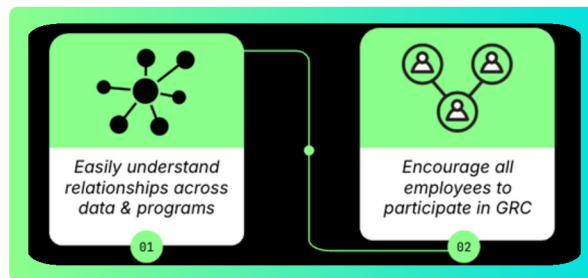
As GRC becomes more embedded in daily operations, it's no longer just about control, it's about connection.

LogicGate is making it easier for teams across the business to engage with GRC by reimagining how people find, understand, and act on data.



Ben Rosenthal
Sr. Product Manager

From streamlined navigation to smarter task assignments and zero-touch access, Risk Cloud is evolving to support true cross-functional collaboration. When everyone from risk managers to frontline users can engage with clarity and confidence, GRC becomes a shared responsibility, not a siloed task.



Key Takeaways

- 1 New ways to view and create relationship mapping make it easier to explore how everything in your GRC program is connected.
- 2 Support real-world collaboration with group-level access provisioning and user tagging in comments
- 3 From power users to casual contributors, Risk Cloud is becoming more intuitive, accessible, and team-friendly by design.